



edmonds center for the arts

Venue Specs

Updated July 21, 2023

Table of Contents

2	Staff Contact
3	General Information
5	Theatre Specifications
6	Theatre Seating Chart
7	Lighting System and Electrical
8	Video
9	Audio
10	Props
11	Wardrobe
12	Lineset Schedule
13	Light Plot
14	Map

Staff Contacts

Production

Echo Johnson

Production Manager
425-275-9486
echo@ec4arts.org

Kramer Kales

Lead Tech
425-386-6529
kramer@ec4arts.org

Sarah Kessler

Stage Manager
206-335-5417
kessler@ec4arts.org

Hosting

Sarah Mixson

Director of Rental Events and Hosting
425-275-9482
sarah@ec4arts.org

Rebekah Cole

Rental Events & Logistics Coordinator
425-275-9482
rebekah@ec4arts.org

Patron Experience

Nicole Giordano

Director of Patron Experience
nicole@ec4arts.org

Event Managers

housemanager@ec4arts.org

Box Office

boxoffice@ec4arts.org

General Information

Our Space

The Edmonds Center for the Arts (ECA) is a non-profit performing arts venue located in downtown Edmonds, Washington. Originally built in 1909 as a school, the building was renovated and reopened in 2006 as a state-of-the-art performing arts center. The ECA hosts a diverse range of performances, including music, theater, dance, comedy, and cultural events, as well as educational programs for all ages. With a mission to inspire, enrich, and engage the community through the arts, the ECA is a beloved cultural hub in the Pacific Northwest. The venue has won several awards for its exceptional programming, facilities, and community impact, making it a must-visit destination for performing arts enthusiasts in the region.

Location

ECA is located at 410 4th Ave. N., Edmonds, WA 98020. Approximately 60 minutes from Seattle-Tacoma Int'l Airport.

Parking & Unloading

Ample parking is available in the theater lot. Loading is from parking lot (street level) through double doors and is limited in size to 6'0" W X 8'0" H. From loading doors gear pushes through hallway through another double door directly to stage right. Several gear carts are available for loading. Bus parking is available on 6th Ave. (East side of the theater). Advance noticed is needed so we can place "bus parking only" signs out. No shore power available for buses. See map on page 15 for more parking info. The building is locked at all doors. You will need to contact someone on site to let you in.

Wi-Fi and Internet

Guest Wi-Fi is available for client use, please contact our production team for credentials. Signs are also posted throughout the backstage spaces with Wi-Fi information.

Direct to modem non-firewall, point-to-point CAT6 unmanaged port plugins available stage right, stage left, and FOH. Speed conditions may vary; download upper limit: 1 GBS, upload upper limit 200 MBS

Smoking, Vaping, Alcohol Use

Smoking and or Vaping is only permitted 25' away from the building. Smoking and or Vaping is not permitted in the building. WAC 110-300-0420. Consuming cannabis products anywhere on the ECA campus is prohibited and illegal. RCW 69.50.445. Alcohol consumption is restricted to inside the building.

Security

The theatre provides lockable door security in areas under its authority, unless otherwise requested, and no additional locks on theatre doors will be permitted. The theatre does not take responsibility for the loss of any personal property or artist equipment while it is in the theatre. Valuables should not be left in dressing rooms. The theatre recommends that the renter designate a representative to collect and keep the renter's valuables until the performance is completed.

Merchandise

Merchandise area is located in the lobby and is equipped with 6' folding tables, dressed in black. Power is available, as well as metal grids for display. Merchandise sellers can be provided with advanced notice. We have credit processing machines available for a per transaction fee, or we can provide you with Wi-Fi for your own machines. Merchandise sales are subject to a venue split percentage, pending contract & advance.

Restaurants/Food

We have amazing restaurants within walking distance and can get food delivered to the theatre. We have local menus in the green room binder and can also forward this to you upon request.

Backline

We own a Boston 7' grand piano by Steinway. We own a conservative number of guitar stands, keyboard stands, rugs, etc. Local backline rentals can be arranged through SIR Seattle, per advance.

Emergency Services

ECA is equipped with an AED and multiple first aid kits. Production staff is trained in first aid, CPR, and emergency procedures. Our nearest emergency care is **Swedish Urgent Care – Edmonds**; 21600 Highway 99, Suite 240, Edmonds, WA 98026; 425-673-3500.

Theatre Specifications

Stage

¾" MDF over 1 ¼" plywood placed on stringers with rubber pucks to provide isolation and spring.

Soft Goods

- (1) Main Curtain (50% fullness).
- (2) Sets of Legs: 8' W X 22'H (no fullness).
- (1) Midstage Traveler Curtain (50% fullness).
Also used as third legs, not movable.
- (3) Borders: 51'W. X 8' H. (no fullness).
- (2) Tab masking: 19'W X 22' H per side. SR on lineset, SL Dead Hung on track.
- (1) Upstage Blackout Curtain, double panel, 56'W X 22' H (no fullness).
- (1) Cyclorama 56'W. X 22'H.
- (1) White Sharks Tooth Scrim 56'W X 22'H.

Company Power

Company Power located Upstage Left.
100 Amp Isolated Ground, 220v 3 phase,
Camlock or tie in.
400 Amp, 220v 3 phase, Camlock or tie in.

Rigging

Type: Single and Double Purchase T-Track Counterweight. Loading bridge and locking rail located stage right.
Arbor Capacity: Single Purchase
Linesets=1100 Lb. Double Purchase
Linesets=900 Lb.
Maximum pipe Trim: +42'7" from stage floor elevation.
¾ Fly loft, full drops don't fly all the way out -
Proscenium height +18' 6", Electric Trim ~25'
No access above loft blocks or head blocks.
Any additional rigging needed beyond the venue installed systems must be thoroughly advanced.
Motors can not be rigged in our venue.

Measurements

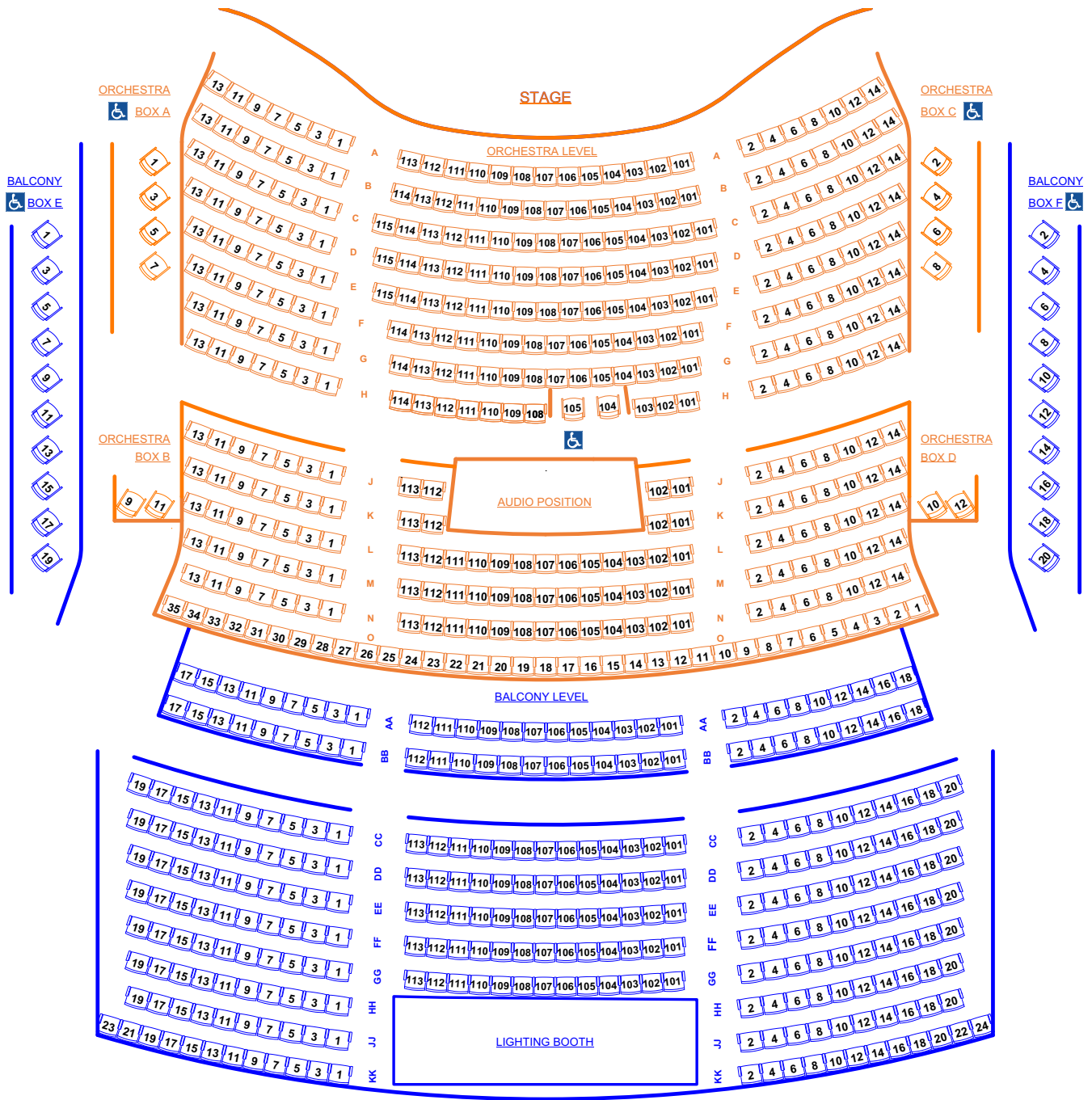
Proscenium opening: 38' W. X 18' H
DS Apron edge to US Wall: 42'
Plaster Line to DS Apron Edge: 17'
Plaster Line to US Wall: 25'
Stage Floor to Baton out trim: 42'7"
Stage floor to Grid: 6'7"
SL Wing Space: 5' Offstage of masking tab.
SR Wing Space: 12' Offstage of masking tab

Orchestra Pit

Uses Wenger STRATA® Orchestra Pit Filler.
Uncovered, it accommodates approximately 26 musicians and equipment.
5 crew X 6 hours to remove and reinstall.

*Our orchestra pit is currently not for use.

Theatre Seating Chart



Main Floor: 388 seats

Balcony: 309 seats

Lighting System & Electrical

Edmonds Center for the Arts maintains a comprehensive repertory light plot that utilizes all fixtures in inventory. It includes a two-color front light wash, all color top light wash, two-color side light wash, five color cyc, gobo washes and specials from each catwalk and electric.

Control & Distribution

ETC Ion XE 20

Running EOS version 3.1

(2) 40-Fader wings

(2) Touch monitors.

ETCNet2 DMX Network - Two Universes

Gateways located: USR SM Panel, 2 port in; Balcony Rail, 2 port in; First Catwalk, 2 Port in; Portable, 4 port out for touring board to connect to system.

Console Locations

House location is in lighting booth located at back of balcony. Tour location is at FOH booth with 2 DMX lines. ETCnet available. 1 Cat6 Dryline available.

Dimming

Dimmer per circuit, ETC 246 @ 2.4k

Circuit Locations

(66) circuits FOH on (2) catwalks, balcony rail, apron

(24) House box-boom ladders

(24) 1st Electric

(24) 2nd Electric

(0) 3rd Electric (LED Movers)

(24) 4th Electric

(12) S.L. Ladder Batten

(12) S.R. Ladder Batten

(60) Loading Bridge, Tormentor, Floor Pockets, Walls, Orchestra Pit

House Plot

See page 14 for rep house plot. Please confirm with Lead Tech for most up to date changes

House Lights

House are controlled via console, or through fader panels on DSR SM Panel. And lighting booth

Followspots

(2) Lycian Super-Arc 400, permanently positioned on either side of lighting booth on balcony level.

Atmospherics

(1) Rosco V-Hazer

(1) Unique Hazer

Both have fans

Accessories

Full complement of cable, sidearms, top hats, two-fers.

Patch Information

PDF and Paper printouts are available, as well as ETC show files. Contact production for these files.

Video Equipment

Projectors

Panasonic PT-RZ120 Laser Projector
Native Resolution: 1,920 X 1,200
1-chip DLP
12,600 center lumens
12,000 ANSI lumens

Barco DP2K-10s Digital Cinema Projector
Native Resolution: 2,048 X 1,080
9,000 lumens

Screens and Projection Surfaces

30'-00" X 16'-06" Front Projection Screen, 54'-00" from Panasonic
16'-00" X 9'-00" Front Projection Screen, 57'-00" from Panasonic,
56'-00" X 22'-00" Cyclorama, 76'-06" from Panasonic

Video Switching

Blackmagic ATEM 4M/E Broadcast Studio 4K
Blackmagic 1M/E Advanced Panel
(2) Blackmagic SmartView 4K Displays
Blackmagic HyperDeck Studio 4K
(4) 1TB Samsung 980 EVO SSDs for Storage
Blackmagic Web Presenter HD
Connected to Isolated Streaming Network (900mbps down/200mbps up[±50])
Blackmagic UltraStudio 4K
Panasonic UE-150 PTZ Camera mounted center on Balcony Rail
Panasonic AW-RP60 Controller
(2) Marshall CV503 cameras mountable with Magic Arms
Dell PC workstation Core i9-9900K
32GB ram
Quadro P2200 - 5GB Thunderbolt Card
Blackmagic DeckLink Duo 2

Audio Equipment & System Information

Front of House

Yamaha CL5
5' 4" X 13' 8" ground level. Audience elevated 20" immediately behind. Standing engineers will obstruct the audience view. 35' from the stage, centered in the room. NOT underneath any overhangs.
Three Cat6 Drylines available.

Meyer Concert Package

(12) Meyer Melodie Line Array Boxes per side
(3) Meyer USW-1p Subwoofers per side
(2) Meyer UPJ-1p Out Fill Speakers
(5) Meyer MM-4XP Front Fills
(1) Galileo 616 System Processor

Cinema Surround Speakers

(6) JBL 8320
(1) EAW Center

Dante Devices

(1) Rio-3224-D (Located DSL)
(1) Rio-1608 (Located DSL)
(1) Ro8-D (Located in Amp Room)
(1) Shure Axient (Located at FOH)
(1) Shure Axient (Located at FOH)
FOH Computer uses DVSC

Monitors

Stage Left most common
Yamaha QL1
(12) JBL SRX 712M Floor wedges
(2) EAW JFX200i Overhead monitors
(16) Discrete Crown amplifier channels

Communications

Three Channel wired Clear-Com System, distributed throughout theater. (6) single channel wired belt packs, (2) Clear-Com FreeSpeakII Wireless dual channel Belt packs.
Backstage Monitors and Paging from stage management positions SR.

Microphone Inventory

Wired Mics

(10) Shure SM58
(2) Shure SM58 Switch
(8) Shure SM57
(1) Shure Beta 87C
(2) Shure SM81
(1) Audix D6
(4) Audix DI
(1) Audix OM5
(1) AT atm250
(3) AT 3031
(4) AT hanging choir mics
(1) AT 4047
(2) AKG 414

Wireless Mics

(6) Channels of Shure Axient Digital.
(6) Shure Handheld AD2/B58
(4) Shure Belt Pack AD1
(4) Countryman E6 Earset
(4) Shure 185 lavalier

DI Boxes

(4) Whirlwind Hotbox active
(2) Whirlwind Director passive
(1) Radial Pro AV2 Stereo DI.

Props

ECA does not keep an inventory of traditional props or scenery pieces.

Chairs

(85) Black, Wenger, Orchestra chairs.

Stands

(85) Black, Manhasset, Wenger.

Stand Lights

(26) plug in

Conductor Podium

(1) 3'x3'x9" with black carpet.

Shells

(12) Wenger Legacy Acoustical shells, each shell is 5' wide.

Choral Risers

(8) Wenger Tourmaster 3 step, 4' wide

Platforms

All of our platforms are 4'x8'. We have the following heights: (4) 8", (2) 16", 3 16"/24", (3) 24".

Decks can lock together and do not have rolling casters. Risers include skirting and stair units without rails.

Marley

Harlequin Reversible Marley Vinyl Floor (black or grey) 6'6" wide panels

(4) 49'5" – Used Upstage of Proscenium

(1) 37'2" – Used Under Proscenium

(1) 14'5" – For Miscellaneous Use

Misc. Equipment and Furniture:

(6) 29" Bar Stools

(2) Handcarts

(2) Flat dollies 2'x2'

(1) 6' A-frame ladder

(1) 20' A-frame ladder

(1) 25' Stick ladder

(1) Man Lift, Self-Propelled

(2) Lecterns, non-adjustable wood

Wardrobe

Dressing Rooms

Two identical small principal dressing rooms off stage right with mirror and lounge chair, no windows. Private accessible bathroom including shower stall with fold down seat.

Ensemble Room

Mid size room capable of holding 10-15 people. Mirrors and chairs. Common use as opener act dressing room.

Green Room

Large size room capable of holding 20-25 people. Fridge, sink, water dispenser, upholstered chairs and couches. Conference table. Video feed from stage. Common use as green room meeting space, dining area.

Additional Spaces

Gym
Center Classroom
North Classroom

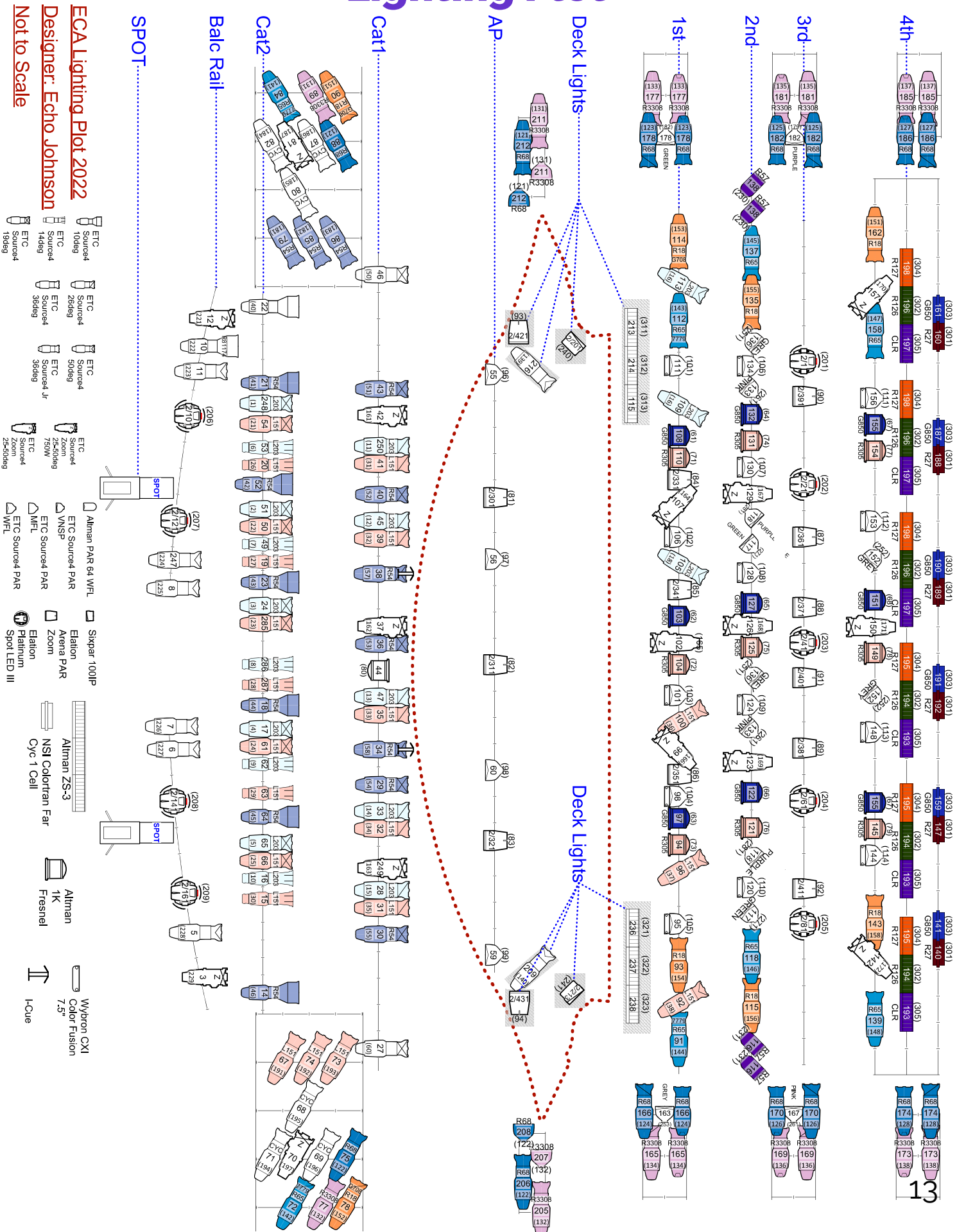
Misc Equipment

(2) Ironing boards
(1) Steamers
(2) Washer
(2) Dryer
(5) Z-style Racks

Line Set Schedule

Line set	Description	Plaster	Length	Notes
PS	16' X 9' Video Screen	0'2"		Motor Operated
1	House Curtain	0'6"	56'	Muled to operate from LS 9
2	30' X 16.5' Video Screen	2'4"	56'	Double Purchase, cannot strike
3	Legs #1	3'1"	56'	Double Purchase, operate from loading bridge
4	1st Electric	4'1"	51'	Motor Operated, Max. out trim 25'
5	There Is No line set 5			
6	Open	6'11"	51'	Double Purchase, operate from loading bridge
7	Open	7'7"	51'	Double Purchase, operate from loading bridge
8	There Is No line set 8			
9	Operate Main Curtain			
10	Border	8'3"	51'	
11	Legs #2	8'11"	51'	
12	Open	9'7"	51'	
13	Open	9'11"	51'	
14	Electric #2	11'1"	51'	Max. Out trim 25'
15	SR Drapery Tab		19'	Runs upstage to downstage
16	SR Ladder Tab		19'	Runs upstage to downstage
17	Electric #3 / Monitor Wedges	13'3"	51'	
18	Open	13'11"	51'	Overlaps Electric #3
19	Open	14'7"	51'	Overlaps Electric #3
20	Border	15'3"	51'	
21	Midstage Traveller (legs #3)	15'11"	51'	Cannot be struck
22	Open	16'7"	51'	
23	Open	16'11"	51'	
24	Electric #4	18'1"	51'	Max. Out trim 25'
25	SL Ladder Tab		19'	Runs upstage to downstage
26	There is no lineset 26			
27	Open	20'3"	51'	
28	Open	20'11"	51'	
29	Drum Carpets	21'7"	51'	
30	Border	22'3"	51'	
31	Cyclorama	22'11"	56'	
32	Full Black	23'7"	56'	

Lighting Plot



Map



* Bus Parking require advance permits